

Radars Flushing Unit for Architectura SLP 69RS



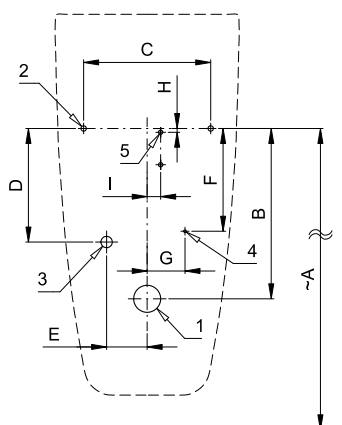
Characteristics



- radar flushing unit for urinal Architectura (Villeroy & Boch) No. 558600, 558700
- includes Bluetooth control (Sanela Control app available for download)
- economy flushing by 1 liter of water
- easy installation by the help of paper drill template
- whole flushing unit is placed behind the urinal
- system reacts only on the direct use of the urinal (it analyses changes, which are proceeded inside of the urinal, when a liquid is flowing through)
- adjustable flushing time 0,5 - 15,5 s
- parameter setting and communication with the electronics via the Sanela Control app (Bluetooth) or the SLD 04 remote control (acoustic indication of setting) without dismantling the urinal
- automatic flushing after each 6 hours non-use
- monitoring of battery capacity (for models with index B)
- possibility to regulate a water flow by the ball valve
- radar flushing unit recharges a water to the siphon after each flushing



Installation Drawing



- 1 - water outlet Ø 50 mm
- 2 - holes for fitting
- 3 - water supply
- 4 - power supply
- 5 - holes for wall plug

| Dimensions (mm) | A | B | C | D | E | F | G | H | I |
|-----------------------|-----|---------|-----|-----|----|-----|----|---|----|
| SLP 69 - ARCHITECTURA | 675 | 315-375 | 235 | 210 | 75 | 190 | 70 | 7 | 25 |

* for the height of the front edge of the urinal 650 mm above the floor

Technical Specification

Operating voltage

- SLP 69RS 24 V DC
- SLP 69RZ 230 V AC/50 Hz
- SLP 69RB 6 V

Power input

- operating by 24 V DC 8 W
- operating by 6 V 3 W

Recommended flow pressure

- 0,1 - 0,6 MPa

Rate of flow

- 18 l/min (inf. data)

Water inlet

- male thread G 1/2"

Water outlet

- inlet fitting with a rubber sealing



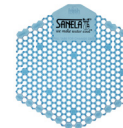
SLA 11



SLA 11A



SLA 11B



SLA 11C

Supply Specification

- SLP 69RS - Supply No. 11695 radar flushing unit including Bluetooth module on the mounting rail, electromagnetic valve, connecting hoses, angle valve with filter and check valve, inlet fitting with a rubber sealing, paper drill template, power supply (SLP 69RZ),
- SLP 69RZ - Supply No. 01695
- SLP 69RB - Supply No. 11697 4 pcs. AA alkaline batteries 1,5 V, 2700 mAh with battery case (SLP 69RB)

Illustrative photo:



Architectura 558600

Illustrative photo:



Architectura 558700

Recommended Accessories

| | | | |
|--------------------|---|------------------|---|
| SLZ 01Y | - | Supply No. 05012 | power supply 24 V DC for operating of max. 5 pcs. of flushing units |
| SLZ 01Z | - | Supply No. 05011 | power supply 24 V DC for operating of max. 9 pcs. of flushing units |
| SLZ 04Y | - | Supply No. 05042 | power supply 24 V DC on DIN rail, for operating of max. 5 pcs. of flushing units |
| SLZ 04Z | - | Supply No. 05041 | power supply 24 V DC on DIN rail, for operating of max. 9 pcs. of flushing units |
| SLZ 04X | - | Supply No. 10049 | power supply 24 V DC on DIN rail, for operating of max. 15 pcs. of flushing units |
| SLZ 06 | - | Supply No. 05060 | power supply 24 V DC for operating of max. 1 pc. of flushing unit |
| SLD 04 | - | Supply No. 07040 | remote control for an adjustment of parameters |
| SLA 11 | - | Supply No. 06110 | deodorising urinal screen - orange colour, mango scent |
| SLA 11A | - | Supply No. 06111 | deodorising urinal screen - red colour, kiwi and grapefruit scent |
| SLA 11B | - | Supply No. 06112 | deodorising urinal screen - transparent colour, honeysuckle scent |
| SLA 11C | - | Supply No. 06113 | deodorising urinal screen - blue colour, cotton bloom scent |
| SLR 09 | - | Supply No. 08090 | mounting frame for ceramic urinals with built-in flush or for ceramic washbasins |
| SLA 36 | - | Supply No. 06360 | set of 4 pcs. alkaline batteries AA 1,5 V, 2700 mAh (for models with index B) |
| SANELA CONTROL APP | | | available for download on the App Store and Play Store |