

**VANDAL-PROOF  
PROGRAM**

**VANDAL-PROOF  
PROGRAM**





VANDAL-PROOF, PRODUCT IS HIGHLY RESISTANT TO WEAR AND MECHANICAL DAMAGE



PRODUCT IS SUITABLE FOR PRISONS AND PSYCHIATRIC FACILITIES, MEETS THE REQUIREMENTS OF HIGH RESISTANCE TO MECHANICAL DAMAGE AND MINIMIZES THE RISK OF POTENTIAL SELF-HARM OR SUICIDE OF USER



THE PRODUCT MEETS STRINGENT REQUIREMENTS WHEN APPLYING FOR THE DISABLED PERSONS AND PEOPLE WITH REDUCED MOBILITY



AUTOMATIC HYGIENIC FLUSH LEGIONELLA PROTECTION  
THE POSSIBILITY OF ACTIVATION OF THE TAPS AND SHOWERS AS A PREVENTION FROM BACTERIA LEGIONELLA



ECONOMICAL AERATOR, RATE OF FLOW 6 L/MIN. ENSURES CONSIDERABLE SAVING OF WATER WHILE MAINTAINING A HIGH COMFORT OF USE



PRODUCT WHICH IS SUITABLE FOR MEDICAL FACILITIES



POLISHED SURFACE



BRUSHED SURFACE



LEAD-FREE TECHNOLOGY MEETING THE MOST STRINGENT STANDARDS FOR THE DISTRIBUTION OF DRINKING WATER, WHICH IS DUE TO EASY RECYCLABILITY ALSO VERY ENVIRONMENTALLY FRIENDLY



EXTENDED WARRANTY OF 5 YEARS ON THE ELECTRONICS SANELA

# PRISON CELL



# WASHBASINS AND TAPS



## SLUN 58 ° SLUN 59 stainless steel wall-hung conical washbasin

- without a tap hole (could be made to order)
- two integrated soap holders
- SLUN 58 Ø 320 mm, external dimensions 500x490x300 mm
- SLUN 59 Ø 360 mm, external dimensions 500x490x300 mm
- assembling through the service door
- material CrNi 18/10 (AISI-304)
- siphon and mounting set included



## SLUN 22 stainless steel wall-hung conical washbasin, expanded polyurethane

- without a tap hole
- two integrated soap holders
- rear assembling by M10 screws (length 190 mm) from the service room
- material CrNi 18/10 (AISI-304)
- M10 screws and stainless steel waste tube included
- filled with expanded polyurethane
- Ø 360 mm, external dimensions 500x470x310 mm



## SLUN 71P ° SLUN 72P stainless steel wall-hung washbasin with vandal-proof piezo electronics and a special anti-suicide spout

- vandal-proof system - water flows after soft push of the piezo button
- water stops flowing after a set time (adjustable time delay from 2 to 62 sec.)
- **SLUN 71P** is destined for cold or premixed water, operating voltage 24 V DC
- **SLUN 72P** is destined for hot and cold water, temperature regulation by angle valves, operating voltage 24 V DC
- **SLUN 72PT** variant with thermostatic valve, operating voltage 24 V DC
- index „B“ - battery voltage 6 V
- assembling through the service door
- material CrNi 18/10 (AISI-304)
- siphon and mounting set included
- Ø 320, external dimensions 500x450x530 mm



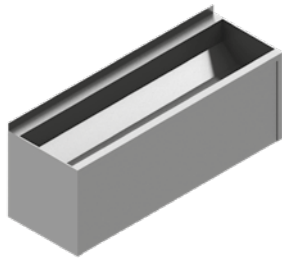
## SLUN 71E ° SLUN 72E automatic stainless steel wall-hung washbasin with electronics ALS and a special anti-suicide spout

- automatic start of water after hands are into the active range
- water stops flowing after removal of hands from the active range of sensor
- **SLUN 71E** is destined for cold or premixed water, operating voltage 24 V DC
- **SLUN 72E** is destined for hot and cold water, temperature regulation by angle valves, operating voltage 24 V DC
- **SLUN 72ET** variant with thermostatic valve, operating voltage 24 V DC
- index „B“ - battery voltage 6 V
- assembling through the service door
- material CrNi 18/10 (AISI-304)
- siphon and mounting set included
- Ø 320, external dimensions 500x450x530 mm



### SLUN 69 stainless steel wall-hung conical washbasin

- without a tap hole (could be made to order)
- assembling by mounting plate
- material CrNi 18/10 (AISI-304)
- siphon and mounting set included
- Ø 300 mm, external dimensions 365x365x270 mm



### SLUN 10PA vandal-proof stainless steel washing through with a sheating

- without a tap hole (could be made to order)
- hole for siphon - standard on the right side (could be changed to order)
- assembling by two services holes
- material CrNi 18/10 (AISI-304)
- siphon and mounting set included
- external dimensions 1250x425x455 mm
- different lengths could be made to order



### SLUN 50PA ° SLUN 80PA stainless steel washing through, stainless steel with vandal-proof piezo electronics

- vandal-proof system - water flows after soft push of the piezo button
- water stops flowing after a set time (adjustable time delay from 2 to 62 sec.)
- **SLUN 50PA** with the legs, external dimensions 1250x480x1270 mm, operating voltage 24 V DC
- **SLUN 80PA** wall-hung, external dimensions 1250x480x670 mm, operating voltage 24 V DC
- assembling through the service door
- material CrNi 18/10 (AISI-304)
- siphon and mounting set included
- different lengths could be made to order



### SLUN 50EA ° SLUN 80EA stainless steel washing through with electronics ALS

- automatic start of water after hands are into the active range
- water stops flowing after removal of hands from the active range of sensor
- **SLUN 50EA** with legs, external dimensions 1250x480x1270 mm, operating voltage 24 V DC
- **SLUN 80EA** wall-hung, external dimensions 1250x480x670 mm, operating voltage 24 V DC
- assembling through the service door
- material CrNi 18/10 (AISI-304)
- siphon and mounting set included
- different lengths could be made to order



**SLUN 54 ° SLUN 55 ° SLUN 56**  
**stainless steel washing trough for hospitals**

- hole for siphon - standard on the right side (could be change to order)
- material CrNi 18/10 (AISI-304)
- including siphon and mounting set
- **SLUN 54** external dimensions 750x450x390 mm
- **SLUN 55** external dimensions 1500x450x390 mm
- **SLUN 56** external dimensions 2250x450x390 mm
- different lengths could be made to order
- index „L“ material CrNi 18/10 (AISI - 316)



**SLUN 75 ° SLUN 76E**  
**vandal-proof stainless steel automatic recessed washbasin**

- automatic start flowing water after insert hands to the active range
- water stops flowing after removal of hands
- **SLUN 75** is destined for cold or premixed water, operating voltage 24 V DC
- **SLUN 76** is destined for hot and cold water, temperature regulation manually by angle valves, operating voltage 24 V DC
- **SLUN 76T** variant with thermostatic valve, operating voltage 24 V DC
- for installation into wall, rear assembling by M10 screws from the service room
- material CrNi 18/10 (AISI-304)
- siphon and mounting set included
- external dimensions 420x330x265 mm



SLUN 70H

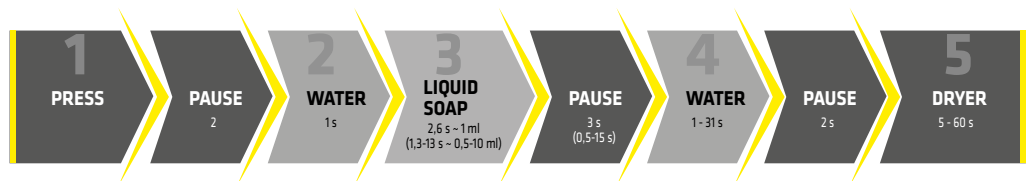
**SLUN 70H ° SLUN 70P**  
**multifunctional stainless steel recessed washbasin with automatic soap dispenser, automatic water outlet and hand dryer**

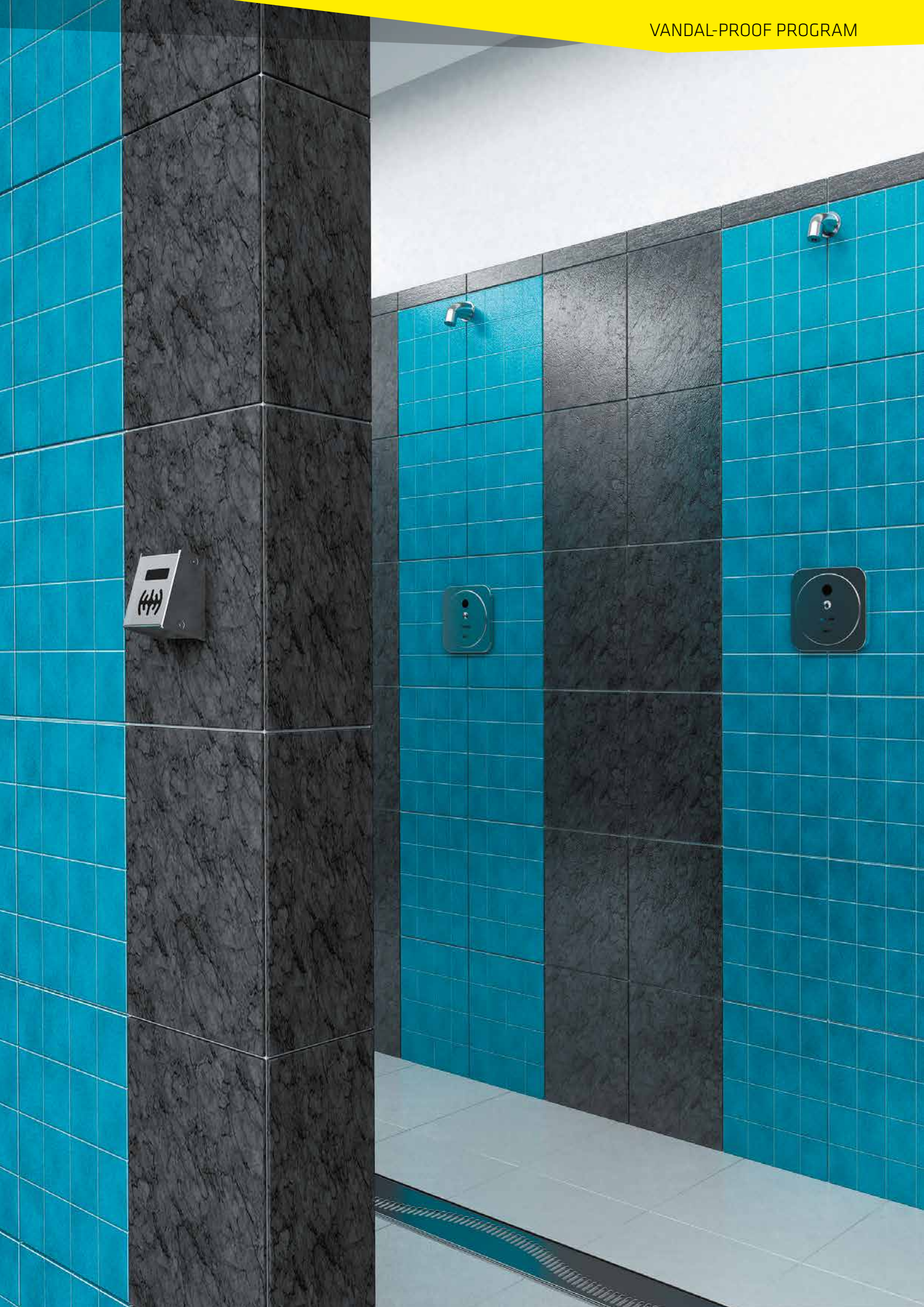
- vandal-proof system - cycle starts after soft push of the piezo button
- material CrNi 18/10 (AISI-304)
- siphon and mounting set included
- **SLUN 70H** for installation into wall, rear assembling by M10 screws from the service room, external dimensions 620x420x240 mm
- **SLUN 70P** for installation into wall, assembling through the service door, external dimensions 970x420x240 mm
- interval adjustment by remote control



SLUN 70P

**System function:**







**SLU 91P ° SLU 93P**  
**stainless steel washbasin taps with vandal-proof piezo electronics**

- vandal-proof system - water flows after soft push of the piezo button
- water stops flowing after a set time (adjustable time delay from 2 to 62 sec.)
- **SLU 91P** is destined for cold or premixed water, operating voltage 24 V DC
- **SLU 93P** is destined for hot and cold water, temperature sets manually by angle valves, operating voltage 24 V DC
- index „D“ - longer spout
- index „B“ - battery voltage 6 V



**SLU 01N ° SLU 02N**  
**automatic washbasin taps with electronics ALS**

- automatic start of water after hands are into the active range
- water stops flowing after removal of hands from the active range of sensor
- **SLU 01N** is destined for cold or premixed water, operating voltage 24 V DC
- **SLU 02N** is destined for hot and cold water, temperature regulation manually by angle valves, operating voltage 24 V DC
- **SLU 02T** variant with thermostatic valve, operating voltage 24 V DC
- function of automatic water stop after 5 minut of continuous flow
- index „B“ - battery voltage 6 V



**SLU 45 ° SLU 46**  
**stainless steel automatic washbasin taps with electronics ALS**

- automatic start of water after hands are into the active range
- water stops flowing after removal of hands from the active range of sensor
- **SLU 45** is destined for cold or premixed water, operating voltage 24 V DC
- **SLU 46** is destined for hot and cold water, temperature regulation manually by angle valves, operating voltage 24 V DC
- function of automatic water stop after 5 minut of continuous flow
- index „B“ - battery voltage 6 V



**SLU 04P17 ° SLU 04P25**  
**wall-mounted washbasin taps with vandal-proof piezo electronics**

- vandal-proof system - water flows after soft push of the piezo button
- water stops flowing after a set time (adjustable time delay from 2 to 62 sec.)
- is destined for cold or premixed water, operating voltage 24 V DC
- **SLU 04P17** - lenght of spout 170 mm
- **SLU 04P25** - lenght of spout 250 mm
- index „B“ - battery voltage 6 V



**SLU 09PTB****stainless steel wall-mounted washbasin taps with vandal-proof piezo electronics with thermostatic valve and special anti-suicide spout**

- vandal-proof system - water flows after soft push of the piezo button
- water stops flowing after a set time (adjustable time delay from 2 to 62 sec.)
- is destined for hot and cold water, temperature regulation by thermostatic valve inside of the tap, battery voltage 6 V
- pressure of hot and cold water must be same
- special vandal-proof stainless steel cover

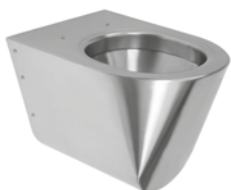
**SLU 44P ° SLU 44PP****stainless steel wall-mounted washbasin taps with vandal-proof piezo electronics and a special anti-suicide spout**

- vandal-proof system - water flows after soft push of the piezo button
- water stops flowing after a set time (adjustable time delay from 2 to 62 sec.)
- **SLU 44P** is destined for cold or premixed water, operating voltage 24 V DC
- **SLU 44PP** is designed for cold and premixed water, operating voltage 24 V DC
- special vandal-proof stainless steel cover, thickness 3 mm, special screws
- index „B“ - battery voltage 6 V

## WC AND FLUSHING UNITS

**SLWN 03****stainless steel floor standing toilet, filled with expanded polyurethane**

- assembling by mounting plate and special screws
- material CrNi 18/10 (AISI - 304), thickness 1,5 mm
- external dimensions 360x535x400 mm

**SLWN 04****stainless steel hanging toilet, filled with expanded polyurethane**

- assembling by mounting plate and special screws
- material CrNi 18/10 (AISI - 304), thickness 1,5 mm
- external dimensions 360x535x362 mm



**SLWN 05**  
**stainless steel hanging toilet**

- assembling by M10 screws (length 190 mm), from the service room
- material CrNi 18/10 (AISI - 304), thickness 1,5 mm
- external dimensions 360x450x400 mm



**SLWN 12**  
**stainless steel hanging toilet, filled with expanded polyurethane**

- assembling by M10 screws (length 190 mm), from the service room
- material CrNi 18/10 (AISI - 304), thickness 1,5 mm
- external dimensions 360x535x362 mm



**SLWN 14**  
**stainless steel floor standing toilet for fitting on wall and floor, filled with expanded polyurethane**

- assembling through the service hatch
- material CrNi 18/10 (AISI - 304)
- external dimensions 360x655x500 mm



**SLWN 07**  
**stainless steel squatting pan into the floor with two flushing heads G 1/2**

- material CrNi 18/10 (AISI - 304), thickness 1,5 mm
- recommended accessories SLA 27 - set for connection to flushing unit SLW 01PA
- stainless steel siphon included
- external dimensions 600x700x60 mm



**SLWN 30**  
**stainless steel floor standing toilet for fitting on wall and floor, with shortened waste pipe for installation waste knee into the floor**

- material CrNi 18/10 (AISI - 304)
- assembling through the service hatch
- siphon and mounting set included
- external dimensions 360x580x400 mm





**SLW 01PA  
toilet flushing unit with vandal-proof piezo electronics**

- vandal-proof system - water flows after soft push of the piezo button
- flushing time is adjustable from 0,5 to 15,5 s
- destined for pressure water from water distribution, isn't possible to use it for toilet with tank, operating voltage 24 V DC
- special vandal-proof stainless steel cover, thickness 3 mm, special screws



**SLW 02PA  
toilet flushing unit with stainless steel piezo with vandal-proof piezo electronics, frame SLR 21 included**

- vandal-proof system - water flows after soft push of the piezo button
- flushing time is adjustable from 0,5 to 15,5 s
- destined for assembling frame with cistern (part of the supply), operating voltage 24 V DC
- special vandal-proof stainless steel cover, thickness 3 mm, special screws

## VANDAL-PROOF COMBINATION UNITS



**SLWN 08 ° SLWN 18  
vandal-proof corner combination unit with washbasin and floor standing toilet, filled with expanded polyurethane**

- push button for operating washbasin and push button for flushing toilet
- **SLWN 08P, SLWN 18P** - WC standing on the right side
- **SLWN 08L, SLWN 18L** - WC standing on the left side
- **SLWN 08ZP, SLWN 18ZP** - wall-hung WC on the right side
- **SLWN 08ZL, SLWN 18ZL** - wall-hung WC on the left side
- variants SLWN 08 - rear assembling by M10 screws from the service room
- variants SLWN 18 - assembling through the service hatch
- material CrNi 18/10 (AISI-304), thickness 1,5 mm



**SLWN 08P ° SLWN 18P  
vandal-proof corner combination unit with washbasin with vandal-proof piezo electronics, filled with expanded polyurethane**

- piezo push button for washbasin spout and piezo push button for flushing toilet
- **SLWN 08PP, SLWN 18PP** - WC standing on the right side
- **SLWN 08LP, SLWN 18LP** - WC standing on the left side
- **SLWN 08ZPP, SLWN 18ZPP** - wall-hung WC on the right side
- **SLWN 08ZLP, SLWN 18ZLP** - wall-hung WC on the left side
- variants SLWN 08 - rear assembling by M10 screws from the service room
- variants SLWN 18 - assembling through the service hatch
- material CrNi 18/10 (AISI-304), thickness 1,5 mm





**SLWN 28 ° SLWN 38**  
**vandal-proof straight combination unit with washbasin,**  
**filled with expanded polyurethane**

- push button for operating washbasin and push button for flushing toilet
- **SLWN 28, SLWN 38** - WC standing on the floor
- **SLWN 28Z, SLWN 38Z** - wall-hung WC
- variants SLWN 28 - assembling through the service room
- variants SLWN 38 - assembling through the service hatch
- material CrNi 18/10 (AISI-304), thickness 1,5 mm



## ACCESSORIES FOR WC AND COMBINATION UNITS



**SLA 25**  
**set for connection**

- for SLWN 08, 18, 28, 38



SLZN 31C



SLZN 31D

**SLZN 31C ° SLZN 31D**  
**black plastic toilet cover seat**

- special solid plastic
- stainless steel hinges

## URINALS AND FLUSHING UNITS



**SLPN 07C**  
**stainless steel urinal with integrated thermic flushing unit**

- vandal-proof flushing system after use of urinal, operating voltage 24 V DC
- flushing time is adjustable for 0,5 to 15,5 s
- automatic hygiene flushing after 24 hours non-use
- index „B“ - battery voltage 6 V
- index „Z“ - integrated power supply 230 V AC
- assembling through the service hatch
- material CrNi 18/10 (AISI - 304)
- external dimensions 360x325x550 mm



**SLPN 07**  
**stainless steel urinal with flushing head without automatic flushing unit**

- assembling through the service hatch
- material CrNi 18/10 (AISI - 304)
- external dimensions 360x325x550 mm



### **SLPN 09C** **stainless steel urinal with integrated thermic flushing unit**

- vandal-proof flushing system after use urinal, operating voltage 24 V DC
- flushing time is adjustable for 0,5 to 15,5 s
- automatic hygiene flushing after 24 hours non-use
- index „B“ – battery voltage 6 V
- index „Z“ – integrated power supply 230 V AC
- assembling through the service hatch
- material CrNi 18/10 (AISI – 304)
- external dimensions 360x300x520 mm

### **SLPN 09** **stainless steel urinal with flushing head without automatic flushing unit**

- assembling through the service hatch
- material CrNi 18/10 (AISI – 304)
- external dimensions 360x300x520 mm



### **SLPN 06** **stainless steel urinal with flushing head without automatic flushing unit, filled with expanded polyurethane**

- assembling by M10 screws (length 190 mm) from the service room
- material CrNi 18/10 (AISI – 304)
- stainless steel waste tube, flushing head and mounting set included
- external dimensions 360x300x520 mm



### **SLPN 02C ° SLPN 03C ° SLPN 04C** **stainless steel wall-hung automatic urinal through with integrated thermic flushing unit**

- vandal-proof flushing system after use urinal, operating voltage 24 V DC
- flushing time is adjustable for 0,5 to 15,5 s
- automatic hygiene flushing after 24 hours non-use
- index „B“ – battery voltage 6 V
- standard lengths – SLPN 02C 600 mm; SLPN 03C 1200 mm; SLPN 04C 1800 mm
- different lengths could be made to order
- material CrNi 18/10 (AISI – 304), thickness 1,5 mm
- siphon, flushing heads, mounting set and cover for siphon included

### **SLPN 02 ° SLPN 03 ° SLPN 04 ° SLPN 05** **stainless steel wall-hung automatic urinal through without integrated thermic flushing unit**

- standard lengths – SLPN 02 600 mm; SLPN 03 1200 mm; SLPN 04 1800 mm;  
SLPN 05 2400 mm
- different lengths could be made to order
- material CrNi 18/10 (AISI – 304), thickness 1,5 mm
- siphon, flushing heads, mounting set and cover for siphon included







### SLPN 02Z ° SLPN 03Z ° SLPN 04Z ° SLPN 05Z stainless steel floor-standing urinal through without electronics and with flushing pipe on the top of through

- collar for connection to hydro isolation
- standard lengths - SLPN 02Z 600 mm, SLPN 03Z 1200 mm, SLPN 04Z 1800 mm, SLPN 05Z 2400 mm
- different lengths could be made to order
- material CrNi 18/10 (AISI - 304), thickness 1,5 mm
- siphon and mounting set included



### SLP 02PA stainless steel urinal piezo flushing unit with vandal-proof piezo electronics

- vandal-proof system - water flows after soft push of piezo button, operating voltage 24 V DC
- flushing time is adjustable from 0,5 to 15,5 s, standardly set on 4 s
- self-flushing 24 hours from last switching valve
- special stainless steel cover, thickness 3 mm, special screws



### SLP 01Z time-controlled flushing unit for urinals and urinal throughs

- operates the flushing of connected devices at preset intervals
- 31 intervals of flushing (10 minutes - 3 days)
- time of switching valve is adjustable from 0,5 to 15,5 s
- power supply included

## SINK



### SLVN 03A vandal-proof stainless steel floor standing sink with sheating

- designed for standing to the wall
- assembling through the service hatch
- material CrNi 18/10 (AISI-304)
- siphon, grating and mounting set included
- external dimensions 500x460x590 mm

# SHOWER PANELS AND SHOWER CONTROLS



## SLSN 01PA ° SLSN 02PA stainless steel shower panel with vandal-proof piezo electronics

- vandal-proof system - water flows after soft push of piezo button
- water stops flowing after a set time (time is adjustable from 2 to 62 s)
- **SLSN 01PA** is destined for cold or premixed water, operating voltage 24 V DC
- **SLSN 02PA** is destined for hot and cold water, temperature regulation by mixer, operating voltage 24 V DC
- material CrNi 18/10 (AISI - 304), thickness 1,5 mm
- index „B“ - battery voltage 6 V
- assembling through the service hatch



## SLS 01PA stainless steel piezo shower control with vandal-proof piezo electronics

- vandal-proof system - water flows after soft push of piezo button, operating voltage 24 V DC
- water stops after set time (time is adjustable from 10 s to 5 min)
- special stainless steel cover, thickness 3 mm, special screws



## SLS 02P stainless steel piezo shower control with mixer and with vandal-proof piezo electronics

- vandal-proof system - water flows after soft push of piezo button, operating voltage 24 V DC
- water stops flowing after set time (time is adjustable from 10 s to 5 min)



## SLA 03 vandal-proof adjustable shower head SLA 39 vandal-proof fixed shower head

- material: brass/chrome
- rate of flow: 9 l/min (0,5-9 bars)



## SLA 13 vandal-proof adjustable shower head SLA 14 vandal-proof fixed shower head

- material: brass/chrome
- rate of flow: 12 l/min (1 bar)

# SANITARY ACCESSORIES



## SLZN 26Z stainless steel recessed holder of toilet paper

- for two coils of toilet paper (max. Ø 135 mm)
- lockable



## SLZN 21Z stainless steel recessed supply bin for paper towels with a bin

- capacity is approx. 600 common paper towels
- removable stainless steel waste bin volume 10 l
- lockable



## SLZN 56Z stainless steel recessed supply bin for folder paper towels

- capacity is approx. 600 common paper towels
- lockable



## SLZN 63Z stainless steel recessed waste bin to the wall

- volume 11 l
- lockable



## SLZN 62Z stainless steel recessed soap dispenser to the wall

- volume 1 l
- lockable



## SLZN 45 vandal-proof stainless steel hook

- mounting under the tiles using screws in each corner



## SLZN 70 vandal-proof stainless steel hook with anti-suicidal system against self-harm



**SLZN 19X**  
stainless steel wall mounted toilet brush



**SLZN 27 ° SLZN 30**  
stainless steel mirror

- different dimensions could be made to order
- mounting on wall by screws in each corner of mirror
- **SLZN 27** dimensions of mirror 500 x 400 mm
- **SLZN 30** dimensions of mirror 600 x 400 mm



**SLZN 44**  
stainless steel pictograms

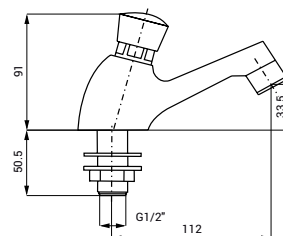
- different types could be made to order (dimensions, pictogram)
- 3M self-sealing tape included
- dimensions 120 x 120 mm
- more pictograms on website [www.sanela.eu](http://www.sanela.eu)

## SELF CLOSING TAPS



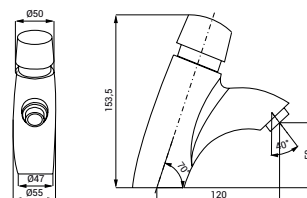
**SLT 101U**  
time set non-concussive basin tap with aerator

- valve opening time 8-12 s



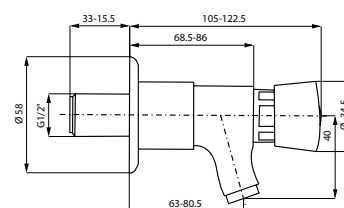
**SLT 109U**  
time set non-concussive coaxial basin mixer tap with aerator

- valve opening time 8-12 s



**SLT 113U**  
time set non-concussive basin tap, adjustable length

- valve opening time 8-12 s





# PROGRAM FOR DISABLED PEOPLE



## SLUN 47X stainless steel washbasin for disabled people

- without hole for tap (could be made to order)
- material CrNi 18/10 (AISI-304)
- siphon and mounting set included
- Ø 360 mm, external dimensions 505x495x150 mm



## SLU 08 ° SLU 08D automatic washbasin tap with electronics ALS

- automatic start of water after hands are into the active range
- water stops flowing after removal of hands
- is destined for cold or premixed water, operating voltage 24 V DC
- **SLU 08** height of tap 205 mm
- **SLU 08D** height of tap 250 mm
- function of automatic water stop after 5 minut of continuous flow
- index „B“ – battery voltage 6 V



## SLWN 11 stainless steel hanging toilet for disabled people, without cover seat

- rear assembling by mounting plate and special screws
- siphon and M10 screws included
- material CrNi 18/10 (AISI-304)
- external dimensions 360x700x350 mm



## SLWN 13 stainless steel floor standing toilet for disabled people

- assembling through the service hatch
- siphon included
- material CrNi 18/10 (AISI - 304), thickness 1,5 mm
- external dimensions 360x700x500 mm

**SLW 03PA****stainless steel vandal-proof toilet flushing unit with vandal-proof piezo electronics and second button for distant flushing for disabled people**

- vandal-proof system - water flows after soft push of piezo button, operating voltage 24 V DC
- flushing time is adjustable from 0,5 to 15,5 s
- destined for a pressure water from water distribution, isn't possible to use it for toilet with tank, operating voltage 24 V DC
- special stainless steel cover, thickness 3 mm, special screws

**SLW 04PA****stainless steel vandal-proof toilet flushing with vandal-proof piezo electronics and second button for distant flushing for disabled people, including the frame SLR 21**

- vandal-proof system - water flows after soft push of piezo button, operating voltage 24 V DC
- flushing time is adjustable from 0,5 to 15,5 s
- destined for mounting frame with container (it is a part of delivery), operating voltage 24 V DC
- special stainless steel cover, thickness 3 mm, special screws

**SLZN 55****stainless steel mirror for disabled people**

- different dimensions could be made to order
- dimensions 900 x 400 mm
- mounting on wall by screws in each corner of mirror

**SLZM 06****stainless steel folding chair to the shower**

- dimensions 450x450 mm
- capacity 130 kg

**STAINLESS STEEL HAND RAILS****SLZM 01 - 07****stainless steel hand rails**

- complet offer on website [www.sanela.eu](http://www.sanela.eu)
- different lengths could be made to order

## COIN AND TOKEN MACHINES



SLZA 01M



SLZA 02M



SLZA 03M



SLZA 40

## TOKEN SHOWER TIMERS

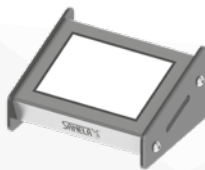
## RFID SHOWER TIMERS



SLZA 35



SLZA 30C



SLZA 30



SLZA 51



SLZA 28



SLZA 29



SLZA 29T

• complete offer on website [www.sanela.eu](http://www.sanela.eu)

## AUTOMATIC HYGIENIC FLUSH



### LEGIONELLA PROTECTION PREVENTION AGAINST BACTERIA LEGIONELLA

- Possible activation of hygienic flush by remote control
- Switching time hygienic flush after the last using can be set to 6, 8, 12, 24, 72, 168 hour
- hygienic flushing time is adjustable on 30, 40, 50, 60 sec. or 1,5; 2; 2,5; 3; 4; 5 minutes